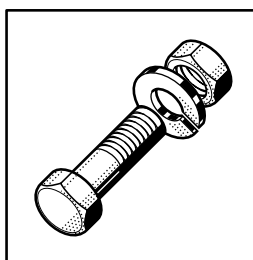




FUX

Spare Parts
Pièces Détachées
Ersatzteile
Onderdelen



Contents

Entry section No.1 + 2	3
Entry section No. 3	4
Entry section No. 1 - 3	5
Entry section - hood	6
Module 1400 mm	7
Tank heating + float switch	8
Tank heating - hot water + steam	9
Pump	10
Pumpe	11
Wash arms	12
Drain	13
Rinse zone	14
Dual rinse	15
Booster el. heated	16
Booster 1,4m ² hot water + steam	17
Booster 0,6m ² hot water + steam	18
Condensers - panels	19
Condenser C1	20
Exhaust - hood	21
Exhaust extraction - fan	22
Drier section D2A	23
Drierpanel	24
Drier D1 + D2 - pipework	25
Blower electric + hot water + steam D2A	26
Exit section	27
Exit section - conveyor drive	28
Exit section - conveyor drive	29
Exit section - conveyor drive	30
Conveyor + strainer system	31

Table des matières

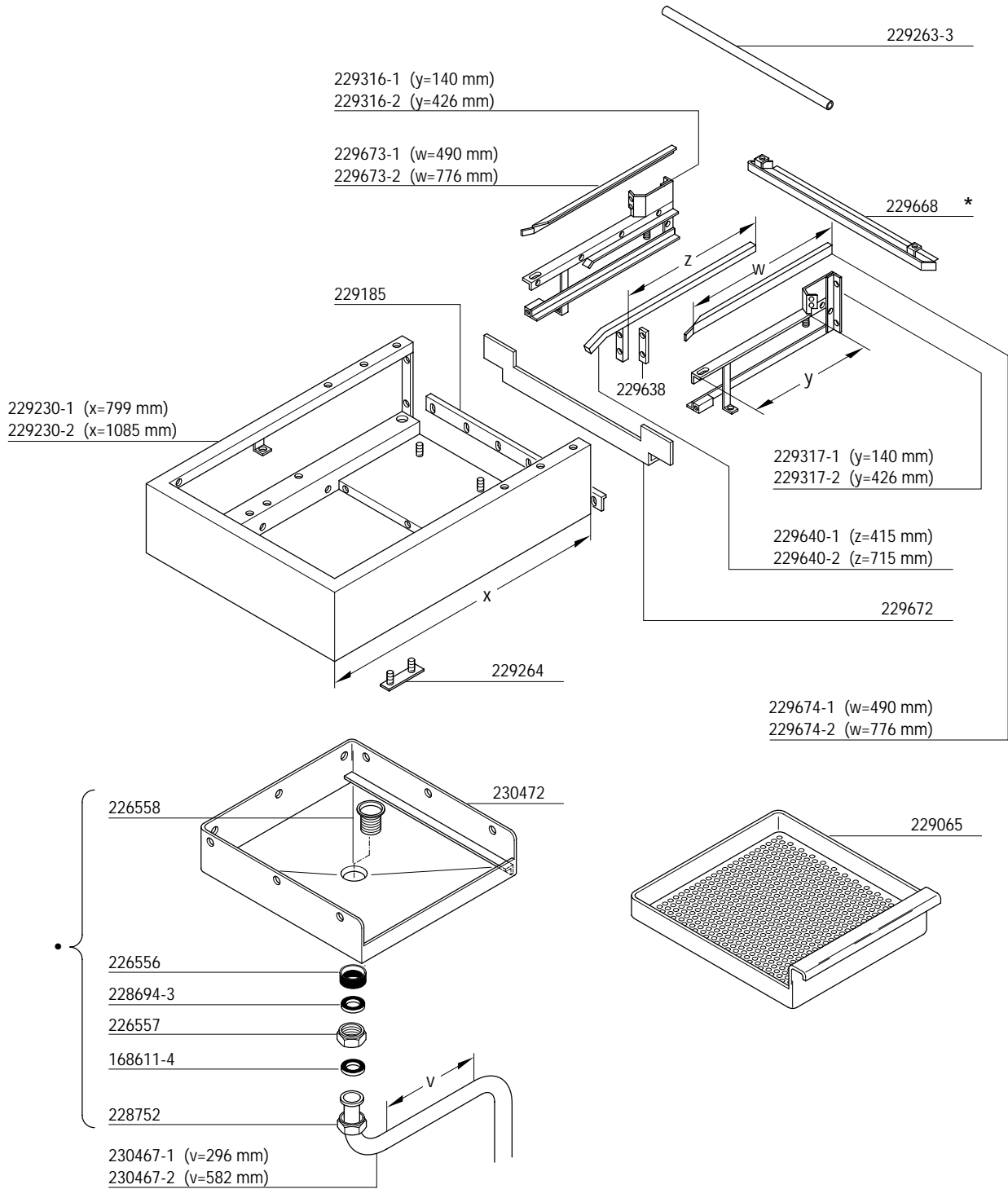
Zone de chargement No. 1 + 2	3
Zone de chargement No. 3	4
Zone de chargement No. 1 - 3	5
Zone de chargement - capot	6
Module 1400 mm	7
Chauffage de bac + interrupteur à flotteur	8
Chauffage de bac - eau chaude + vapeur	9
Pompe	10
Pompe	11
Bras de lavage	12
Vidange	13
Zone de rincage	14
Double rincage	15
Chaudière électrique	16
Chaudière 1,4m ² eau chaude + vapeur	17
Chaudière 0,6m ² eau chaude + vapeur	18
Condenseurs - habillage	19
Condenseur C1	20
Extraction des buées - capot	21
Extraction des buées - ventilateur	22
Zone de séchage D2A	23
Séchage - panneaux	24
Séchage D1 + D2 - tuyauterie	25
Soufflage électrique + eau chaude + vapeur D2A	26
Zones de déchargement	27
Zones de déchargement - entrainement du convoyeur	28
Zones de déchargement - entrainement du convoyeur	29
Zones de déchargement - entrainement du convoyeur	30
Convoyeur + système des filtres	31

Inhalt

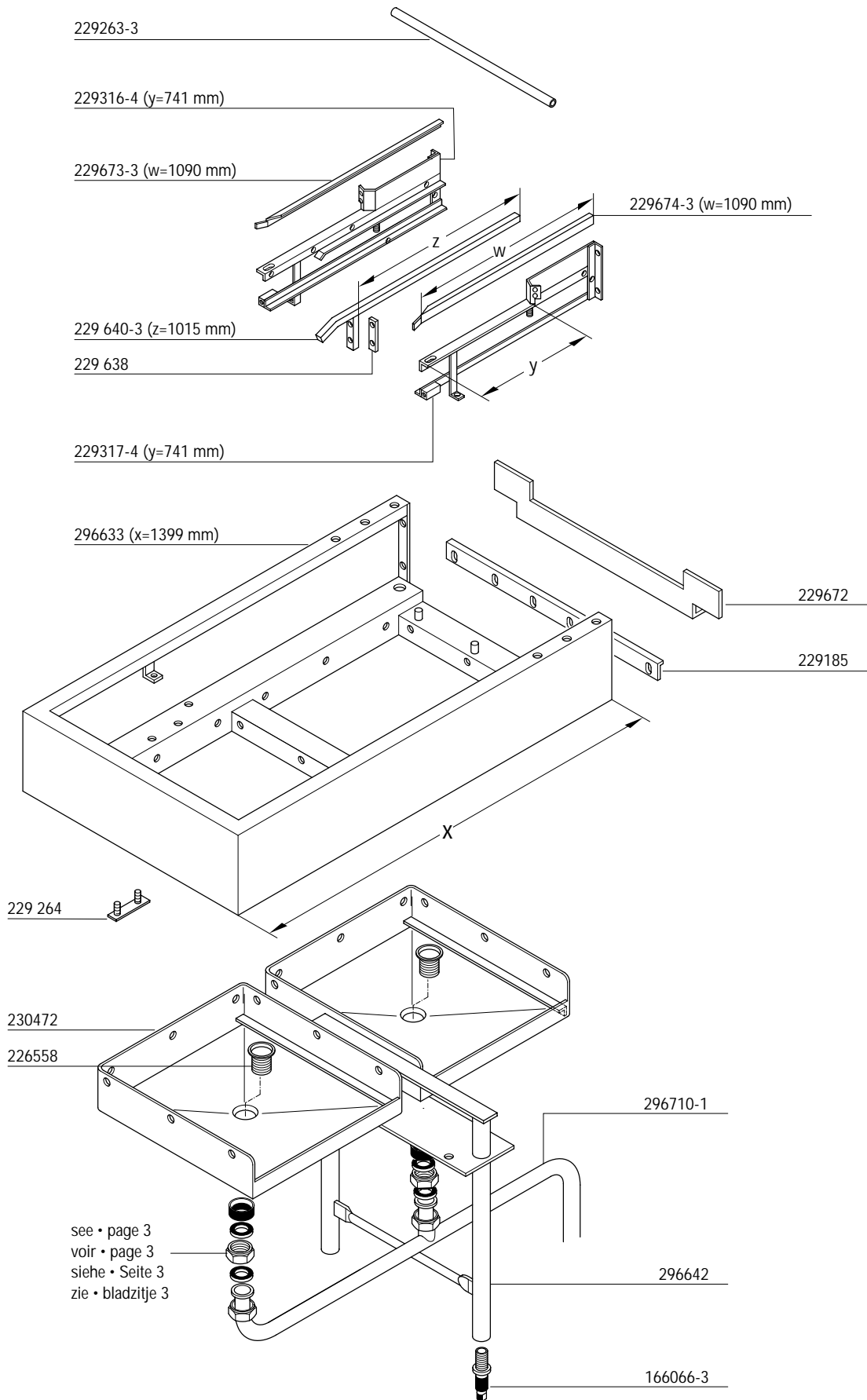
Zulaufstrecke Nr. 1 + 2	3
Zulaufstrecke Nr. 3	4
Zulaufstrecke Nr. 1 - 3	5
Zulaufstrecke - Haube	6
Modul 1400 mm	7
Tankheizung + Schwimmerschalter	8
Tankheizung - Heißwasser + Dampf	9
Pumpe	10
Pumpe	11
Wascharme	12
Ablauf	13
Klarspülzone	14
Duo-Nachspülung	15
Durchlauferhitzer el. beheizt	16
Durchlauferhitzer 1,4m ² HW + dampfbeheizt	17
Durchlauferhitzer 0,6m ² HW + dampfbeheizt	18
Kondensatoren - Verkleidungen	19
Kondensator C1	20
Wrasenabzug - Haube	21
Wrasenabzug - Ventilator	22
Trockenzone D2A	23
Trocknung - Verkleidung	24
Trocknung D1 + D2 - Ventilleitung	25
Trocknungsgebläse elektrisch + HW + dampfbeheizt D2A	26
Auslaufzone	27
Auslaufzone - Bandantrieb	28
Auslaufzone - Bandantrieb	29
Auslaufzone - Bandantrieb	30
Band + Siebssystem	31

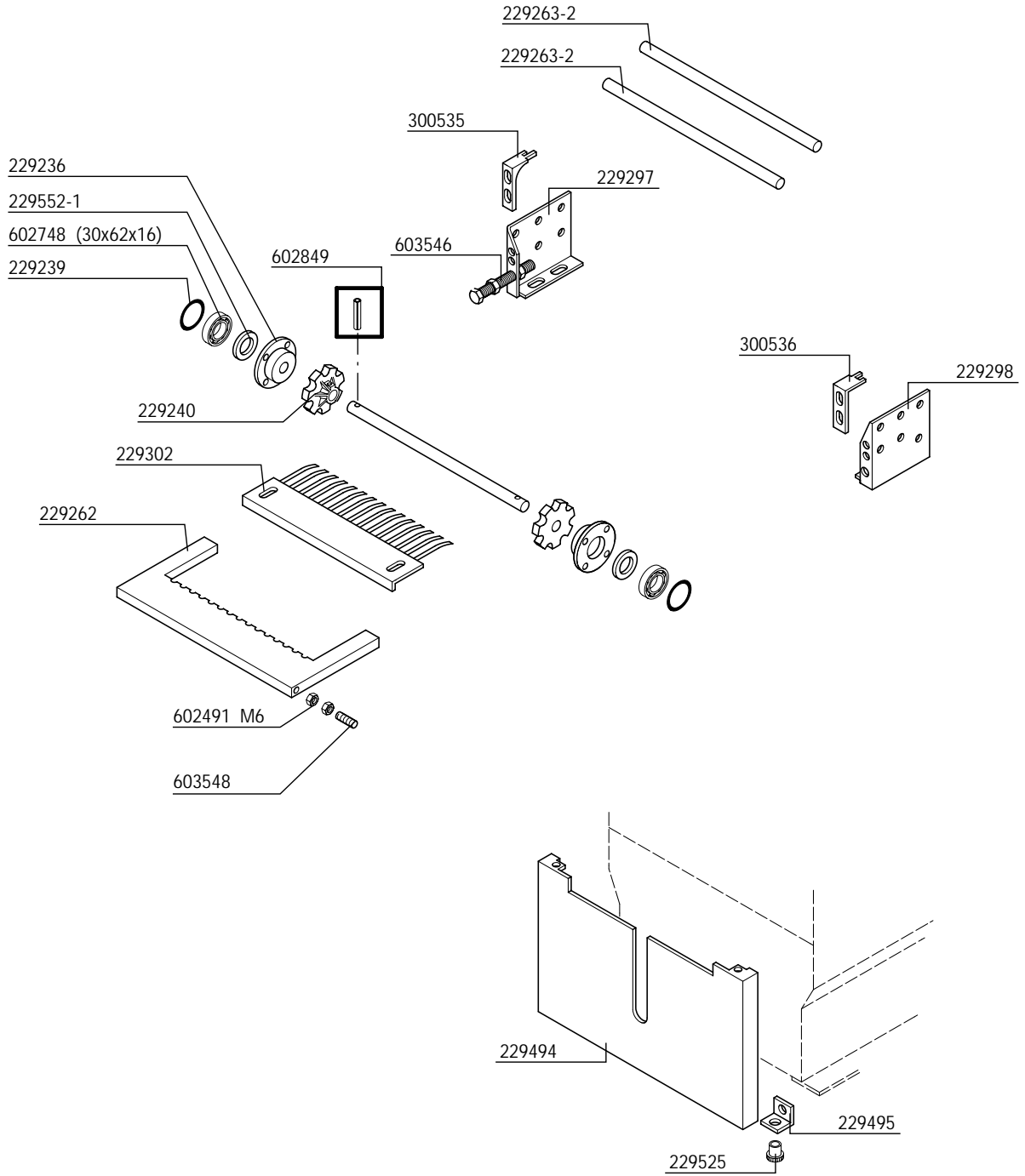
Inhoud

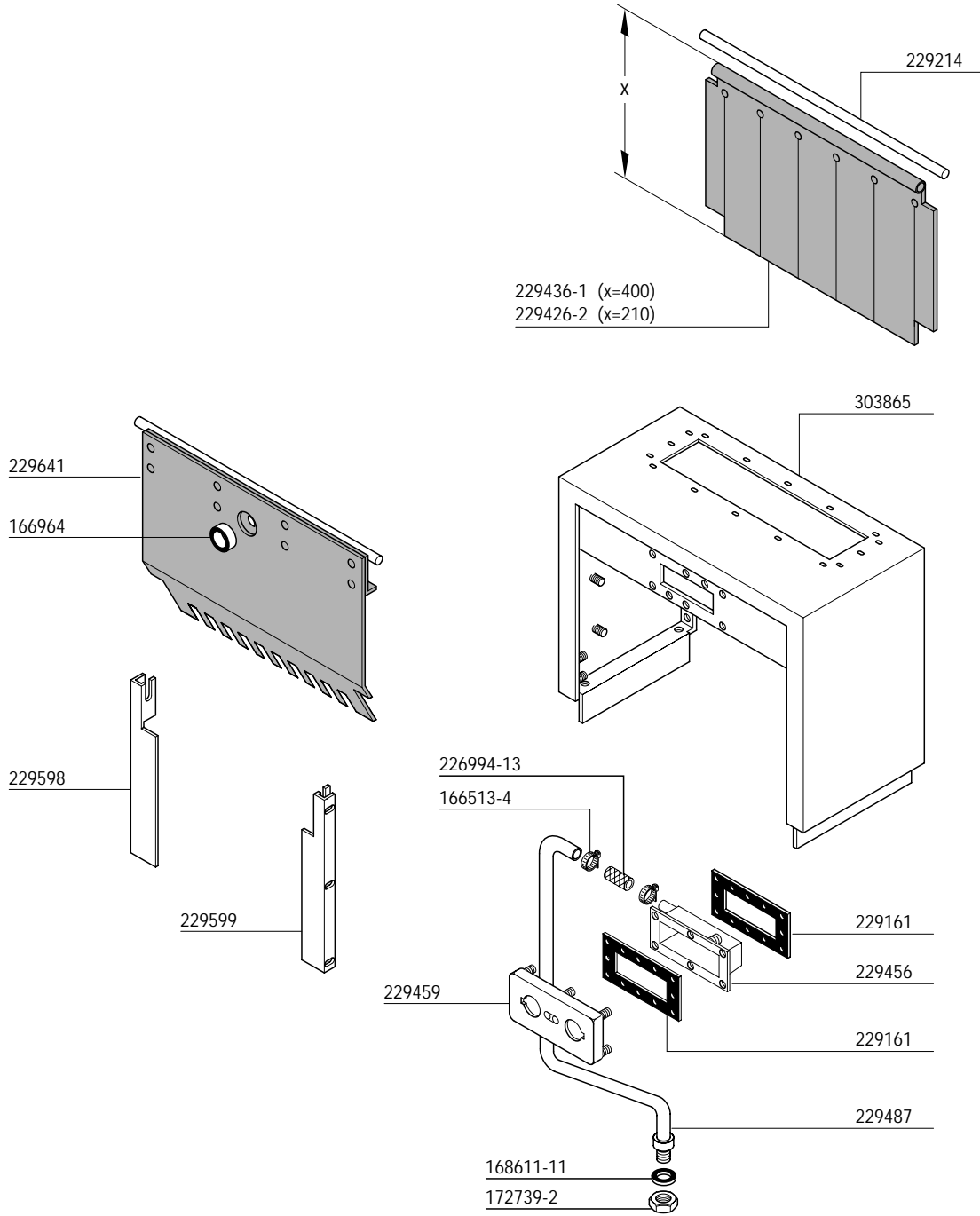
Toevoersektie Nr. 1 + 2	3
Toevoersektie Nr. 3	4
Toevoersektie Nr. 1 - 3	5
Toevoersektie - kap	6
Modul 1400 mm	7
Tankverwarming + zwem-schakelaar	8
Tankverwarming - heet water + steam	9
Pomp	10
Pomp	11
Wasarmen	12
Afvoer	13
Naspoelzone	14
Duo Naspoeling	15
Booster elektrisch	16
Booster 1,4m ² heet water + stoom verwarming	17
Booster 0,6m ² heet water + stoom verwarming	18
Kondensorbekledingen	19
Kondensator C1	20
Wasemafzuiging - kap	21
Wasemafzuiging - ventilator	22
Droogzone D2A	23
Droogzone - bekleding	24
Droging D1 + D2 magneetklep	25
Ventilator van droger el. + heet water + stoom verwarming D2A	26
Afvoersektie	27
Afvoersektie - transportbandaandrijving	28
Afvoersektie - transportbandaandrijving	29
Afvoersektie - transportbandaandrijving	30
Transportbanden + zeef systeem	31

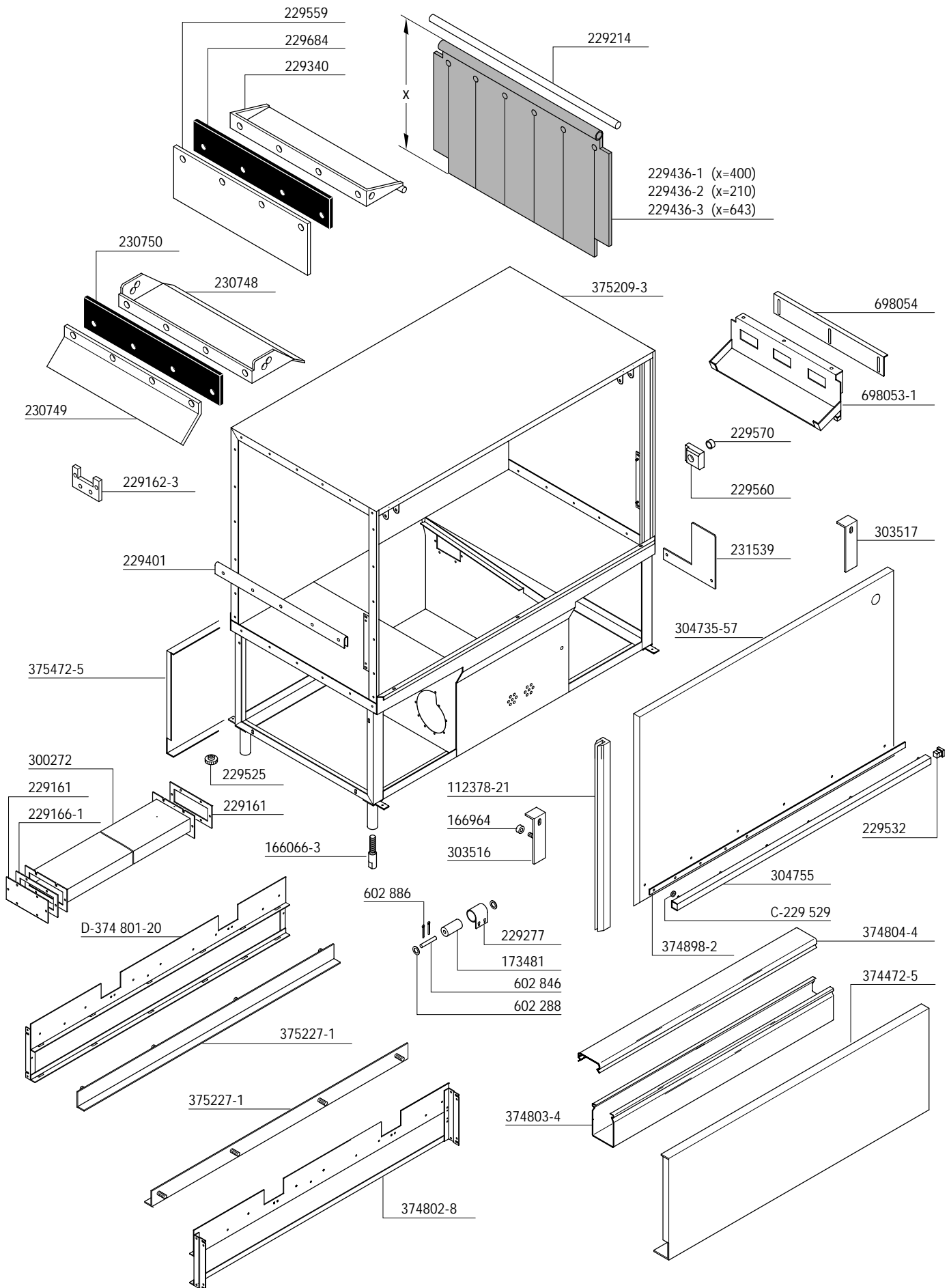


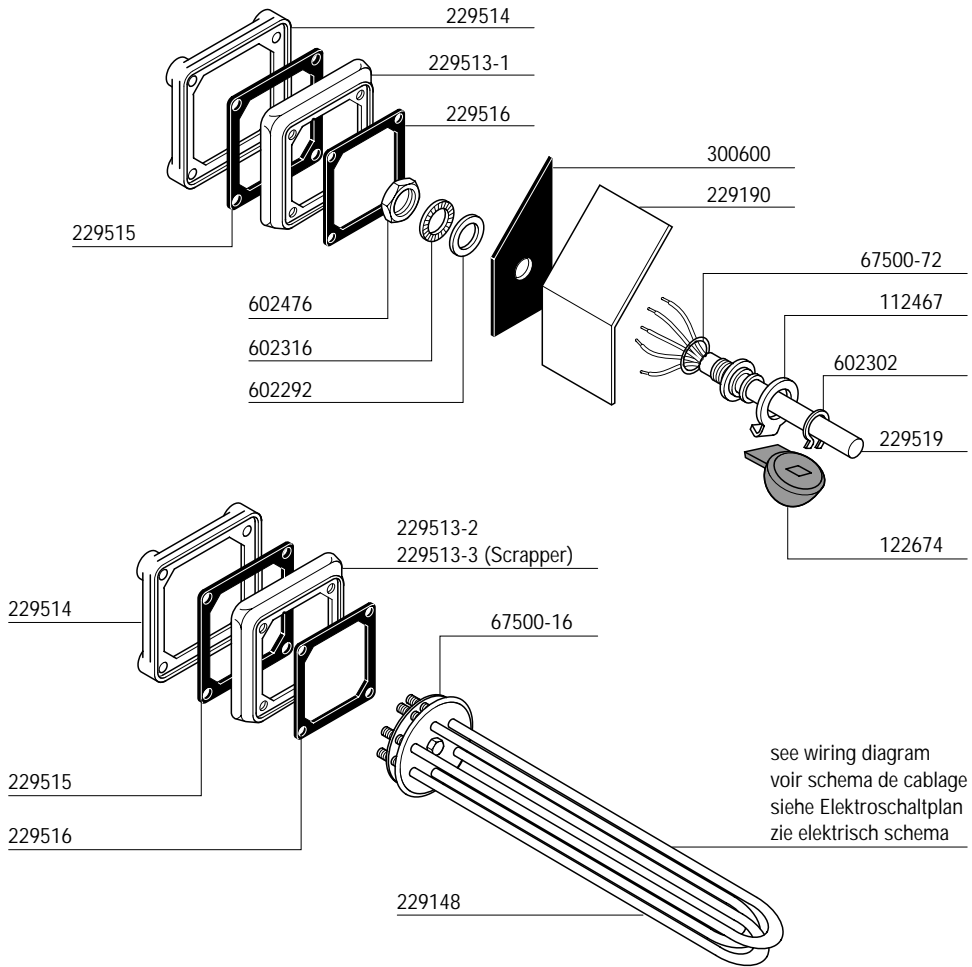
* optimal: verlängertes Wasserleitblech 375702-3

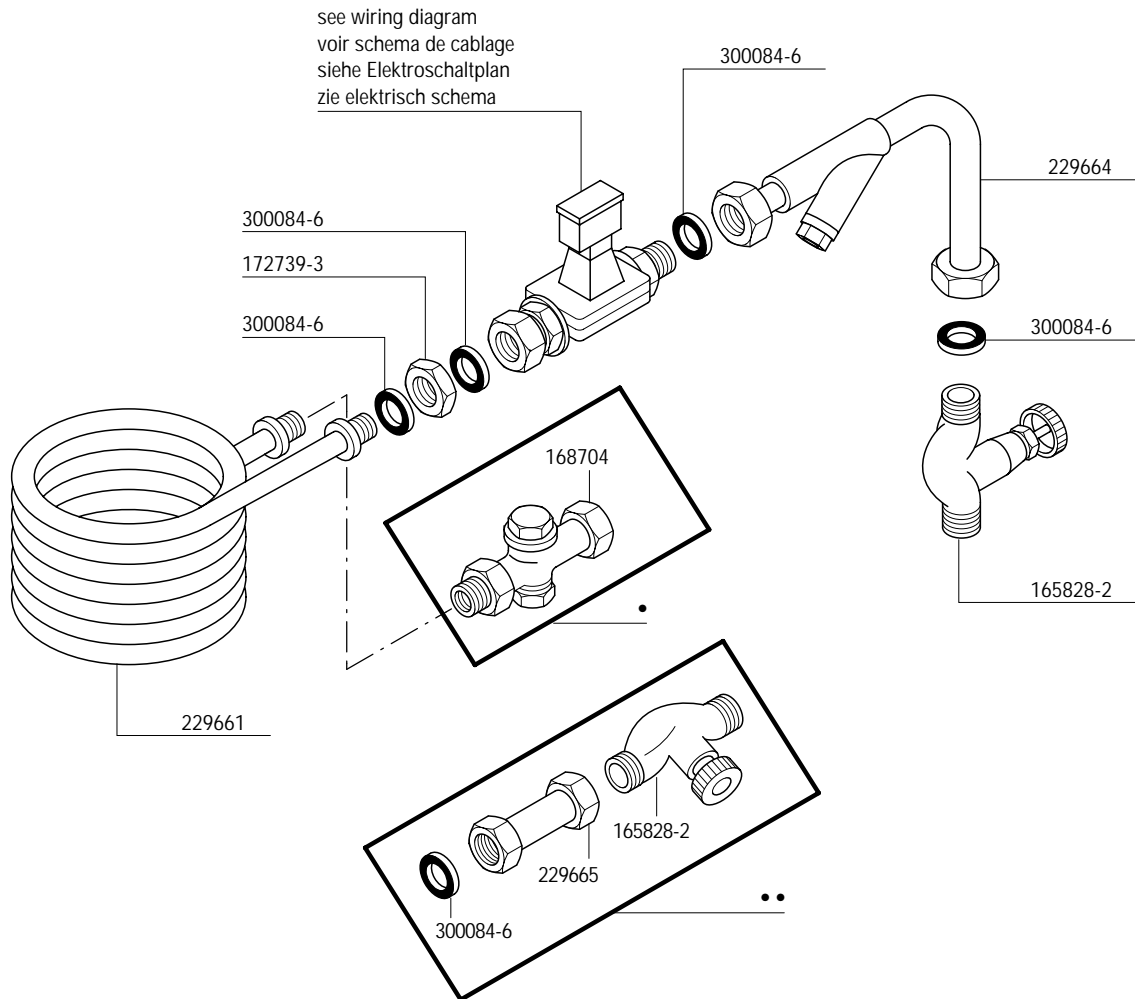


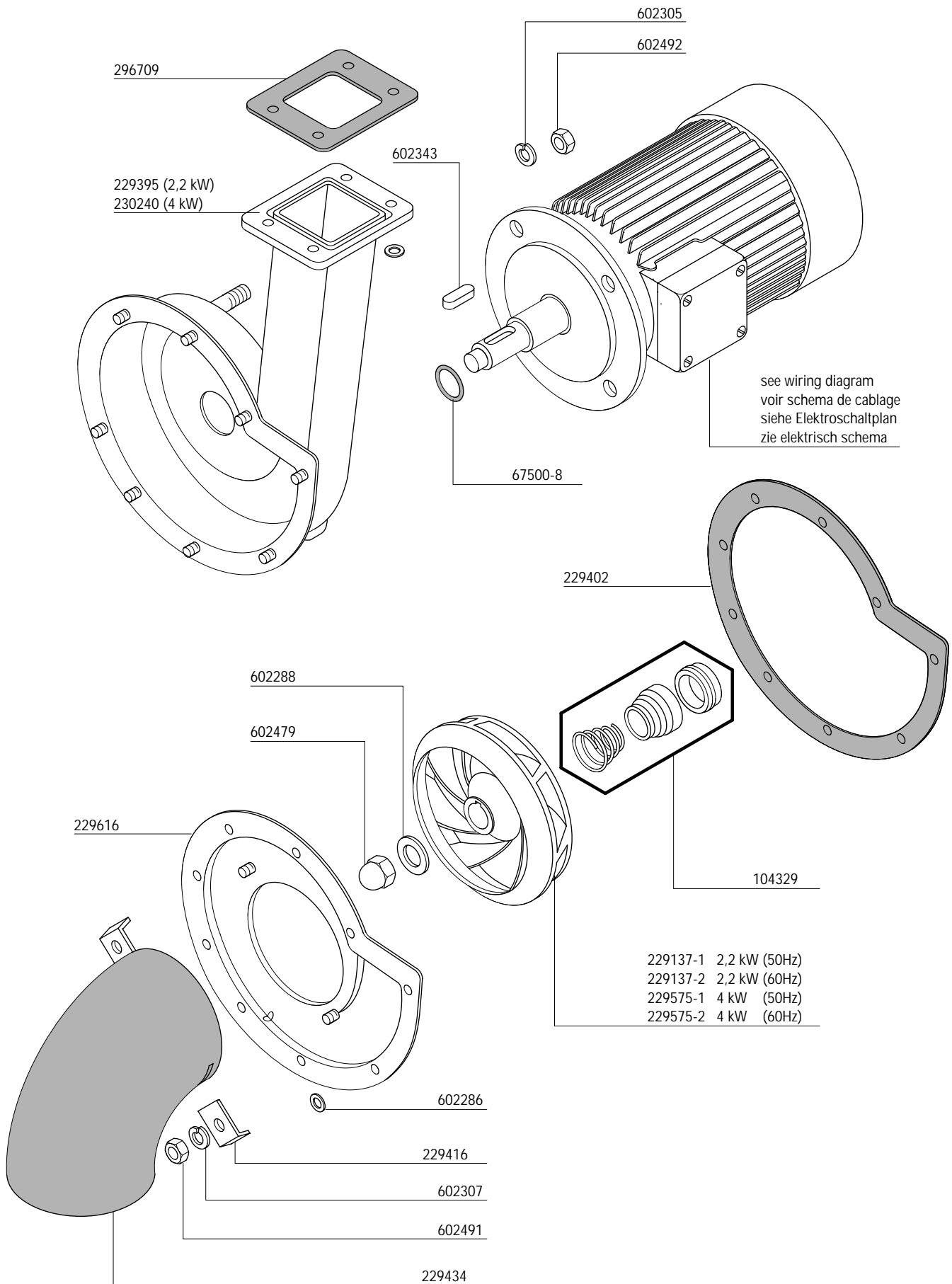


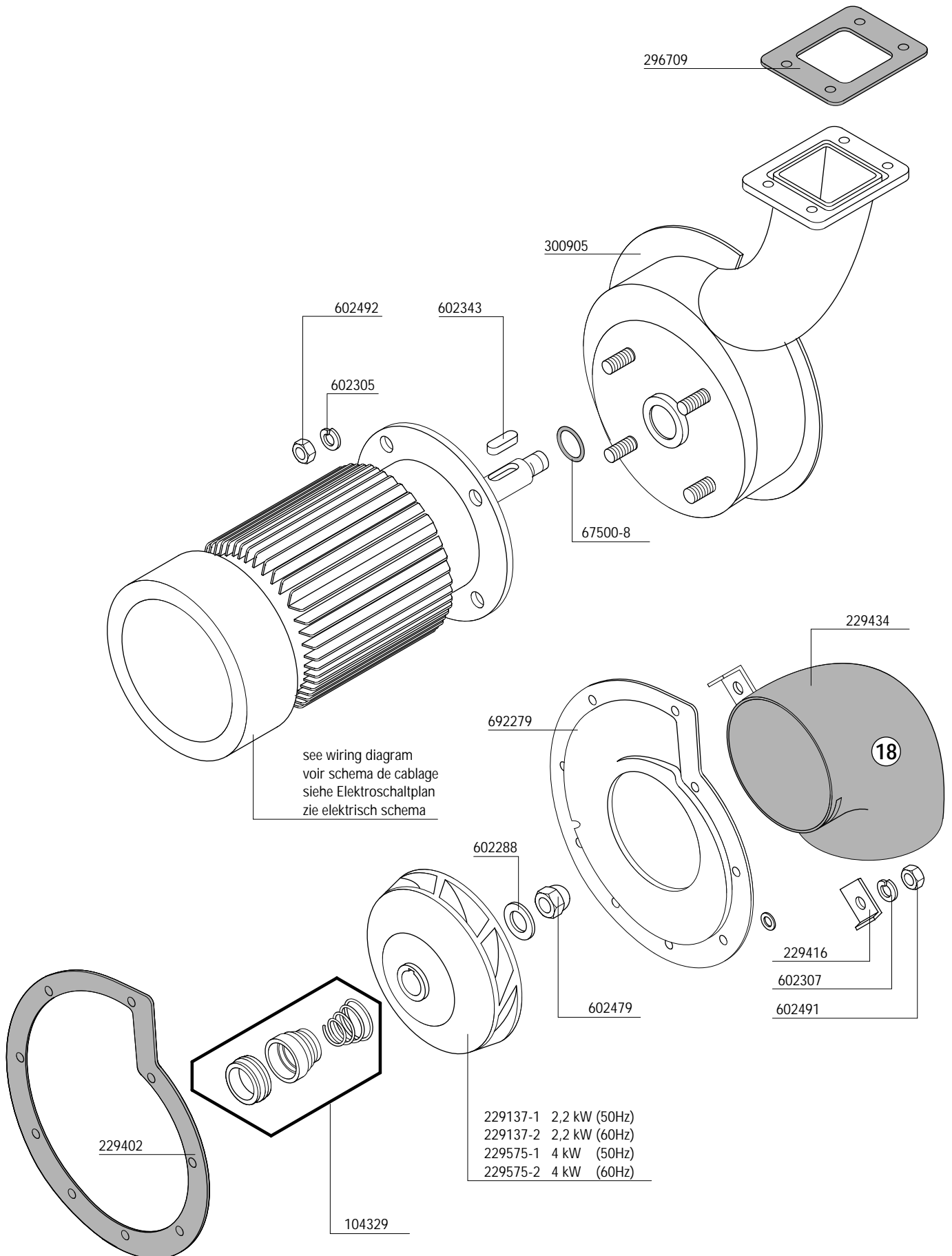


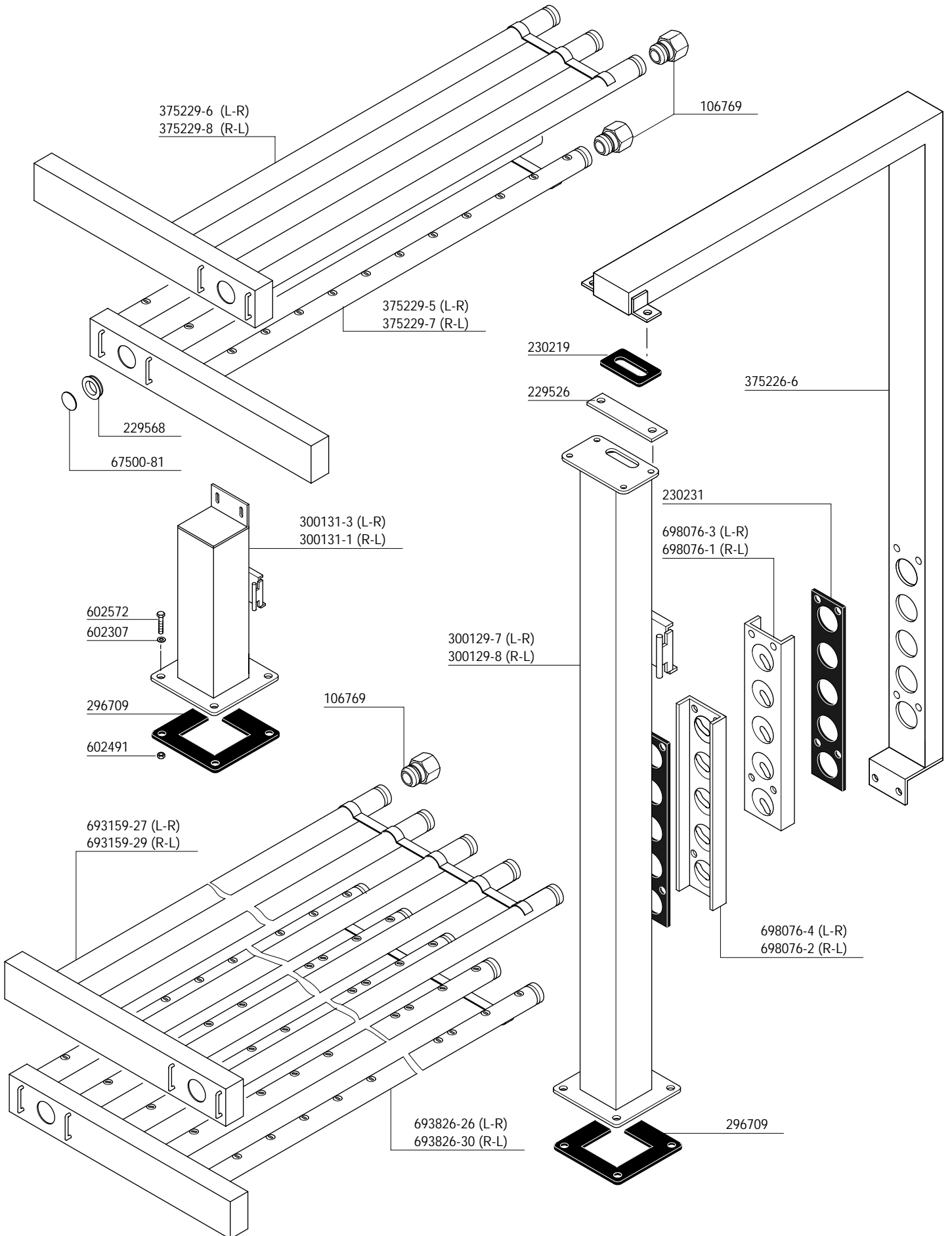


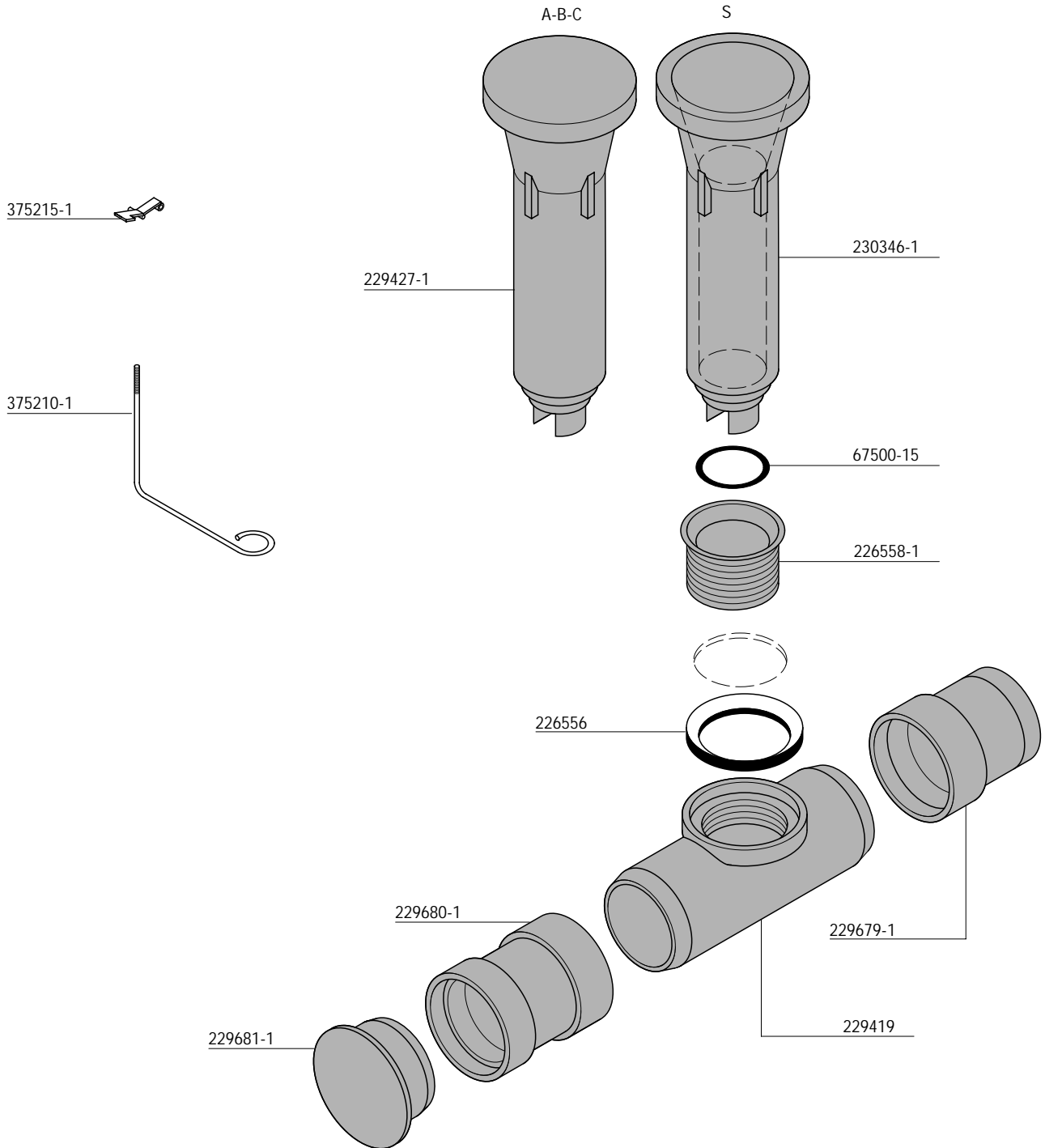


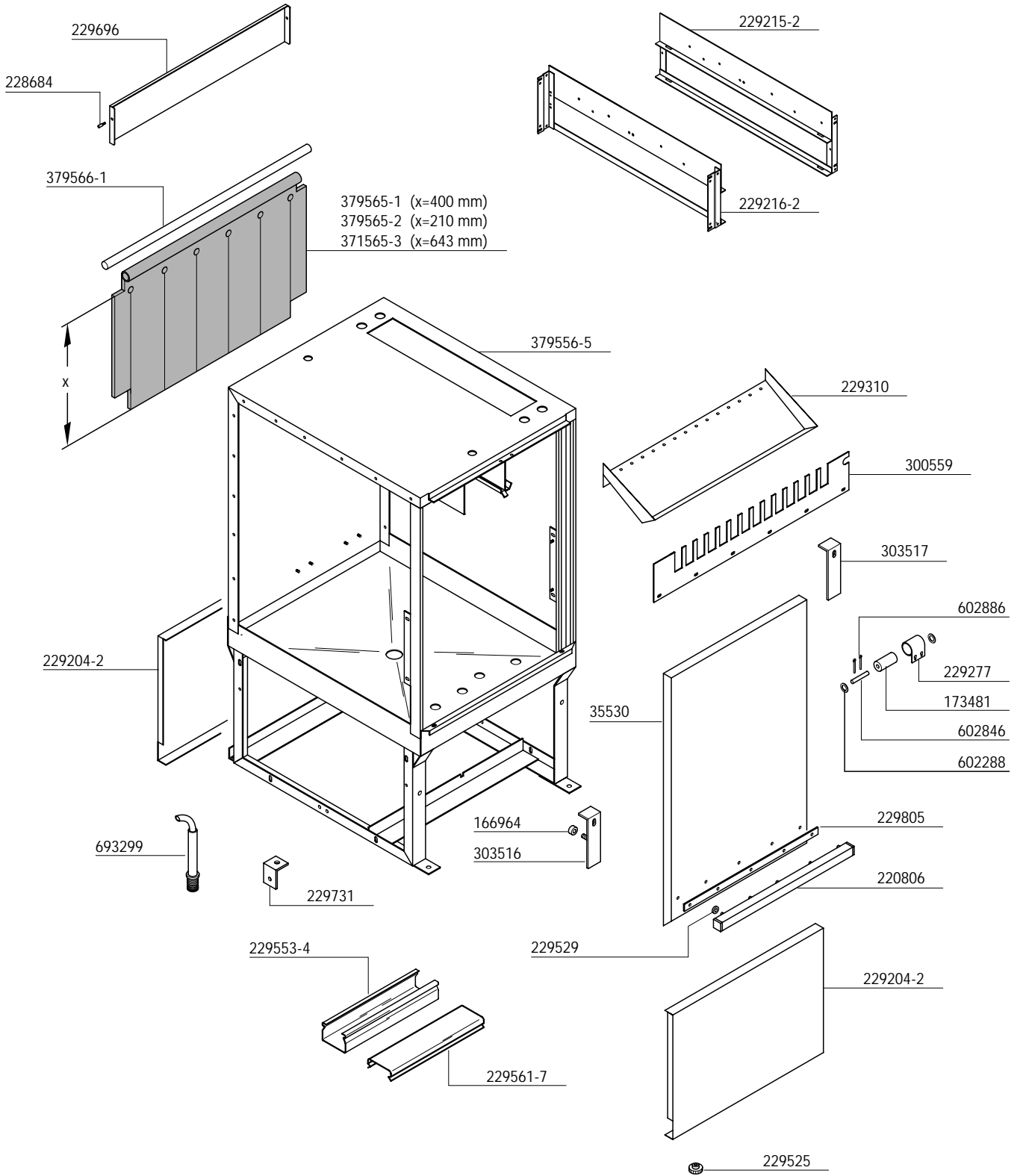


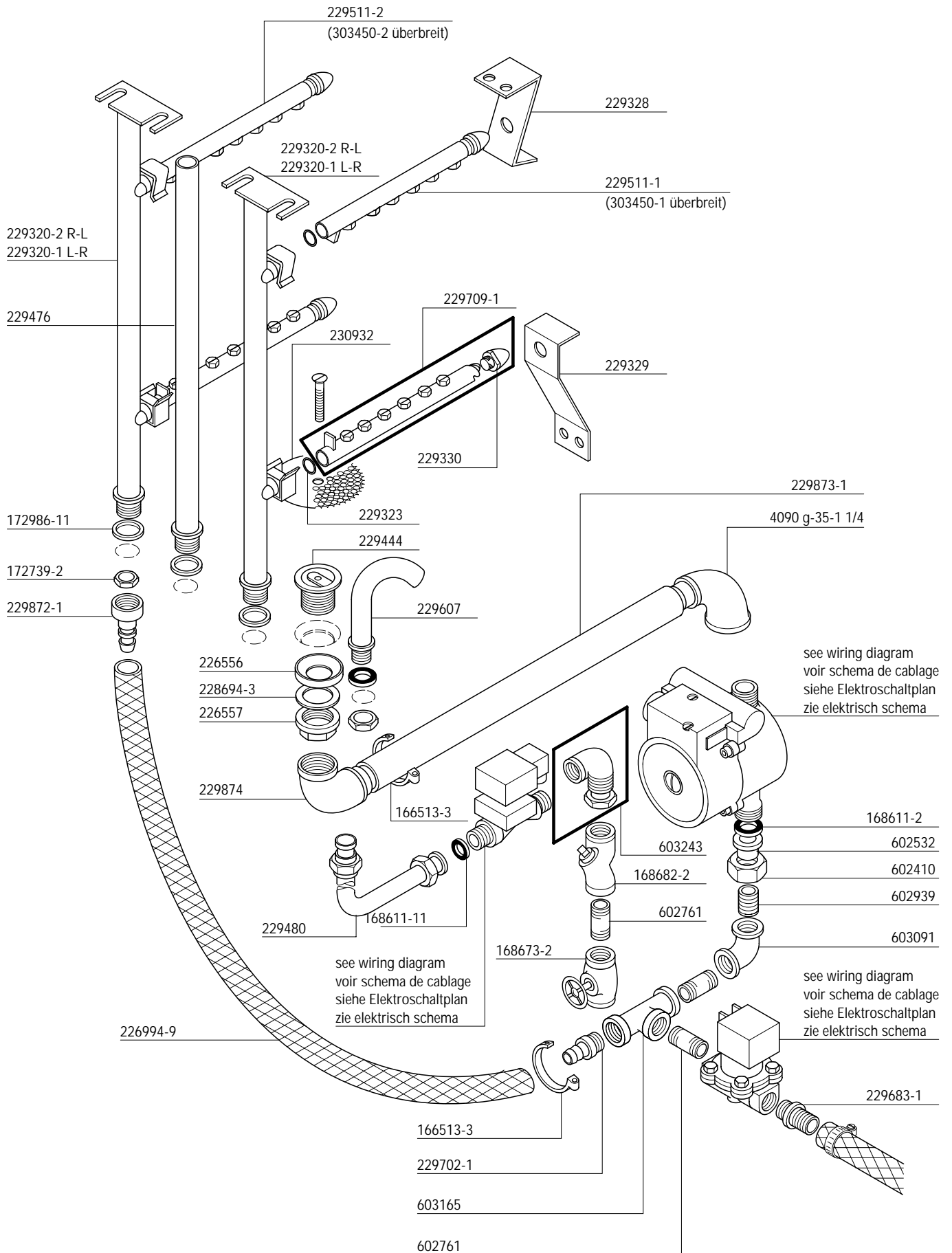


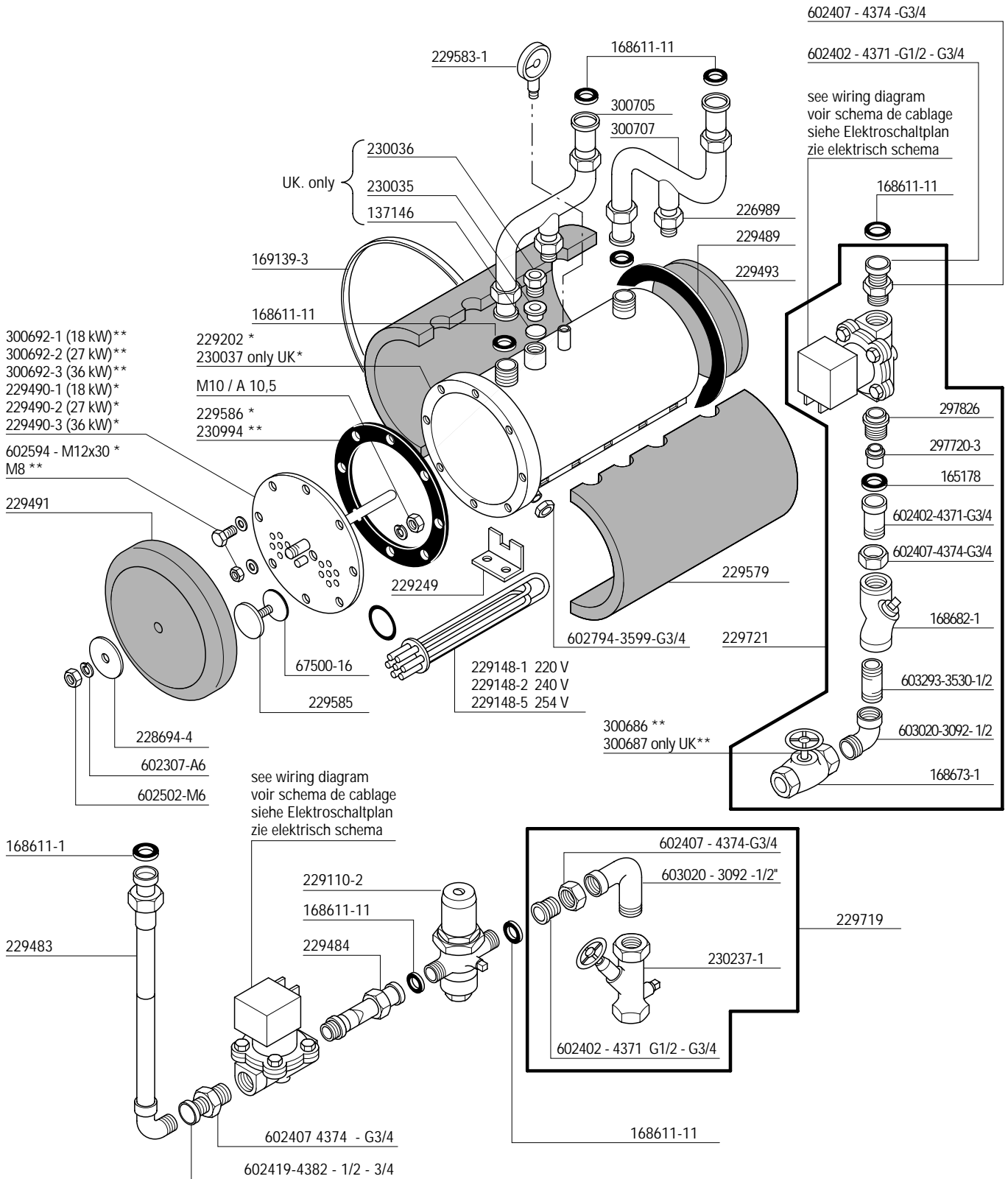






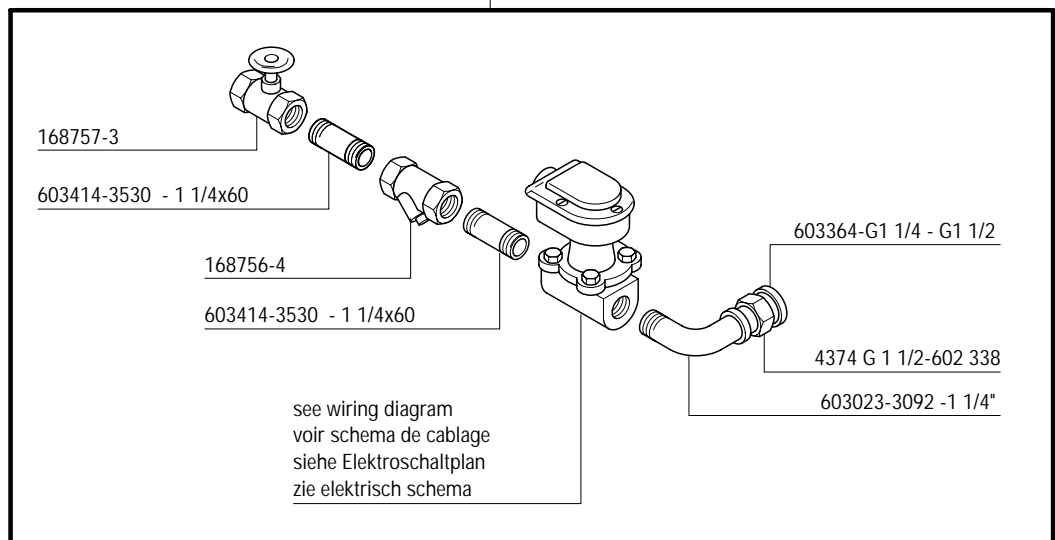
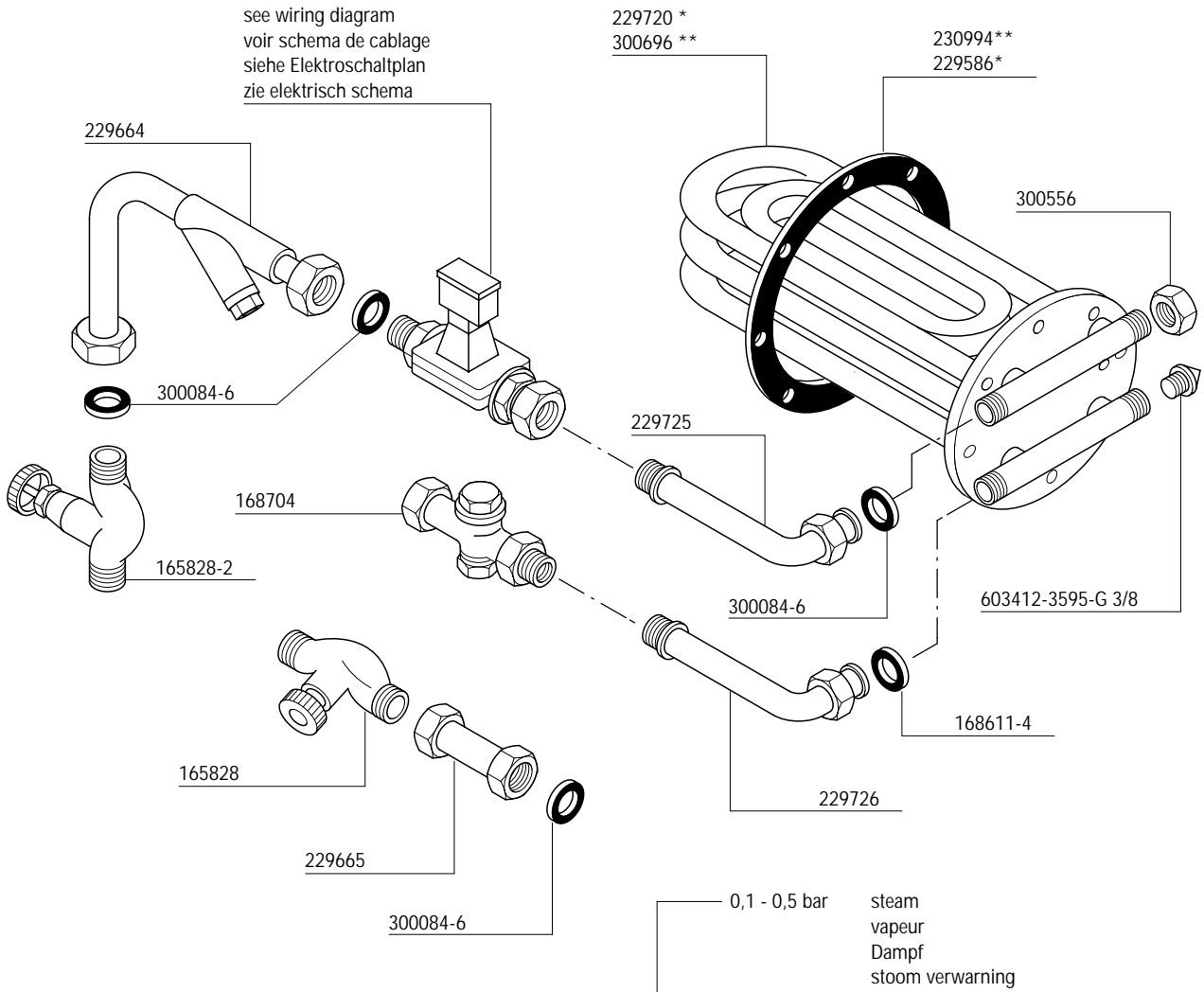


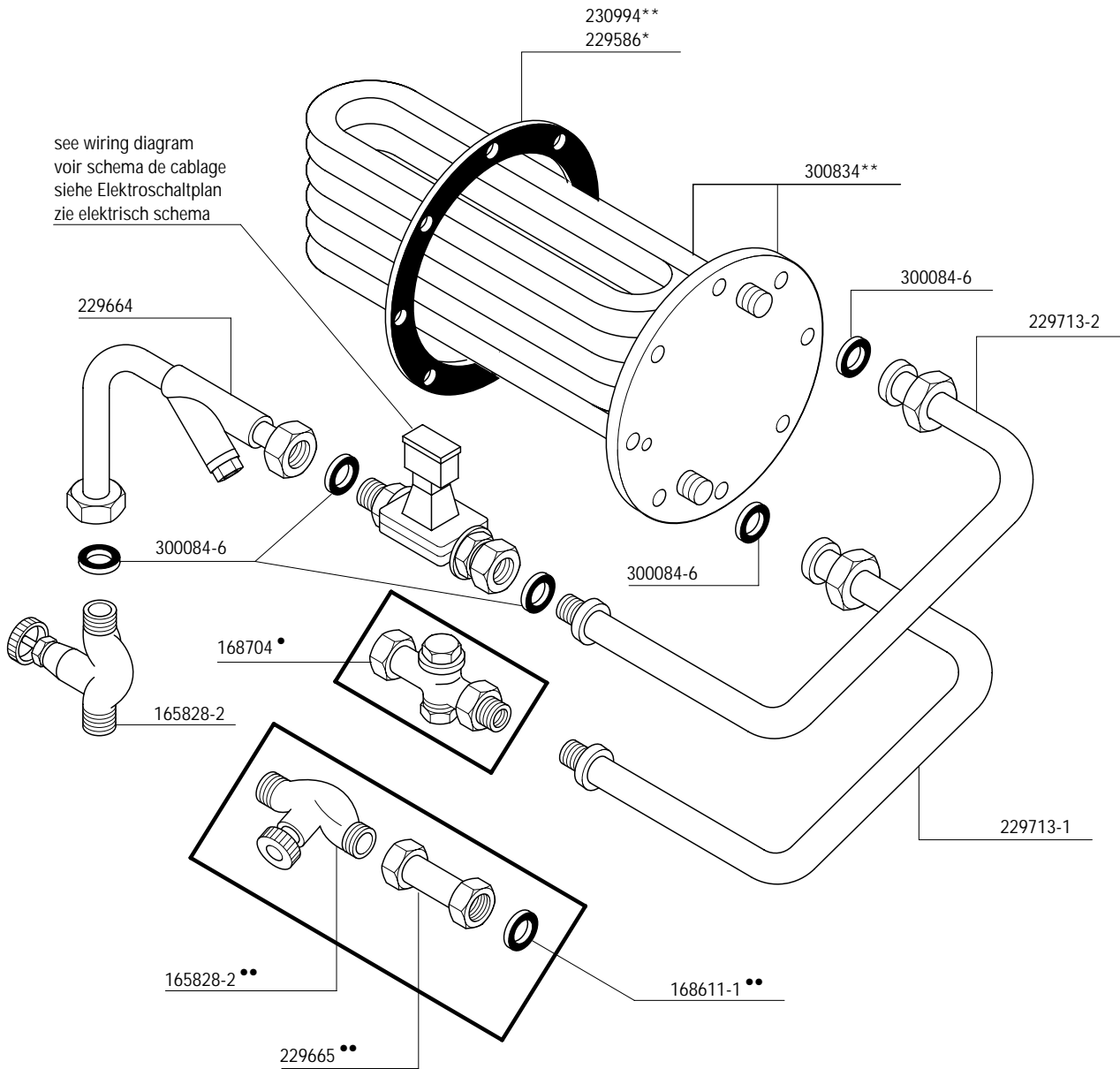




* 8 hole
8 trous
8 Loch
8 gaten

** 10 hole
10 trous
10 Loch
10 gaten



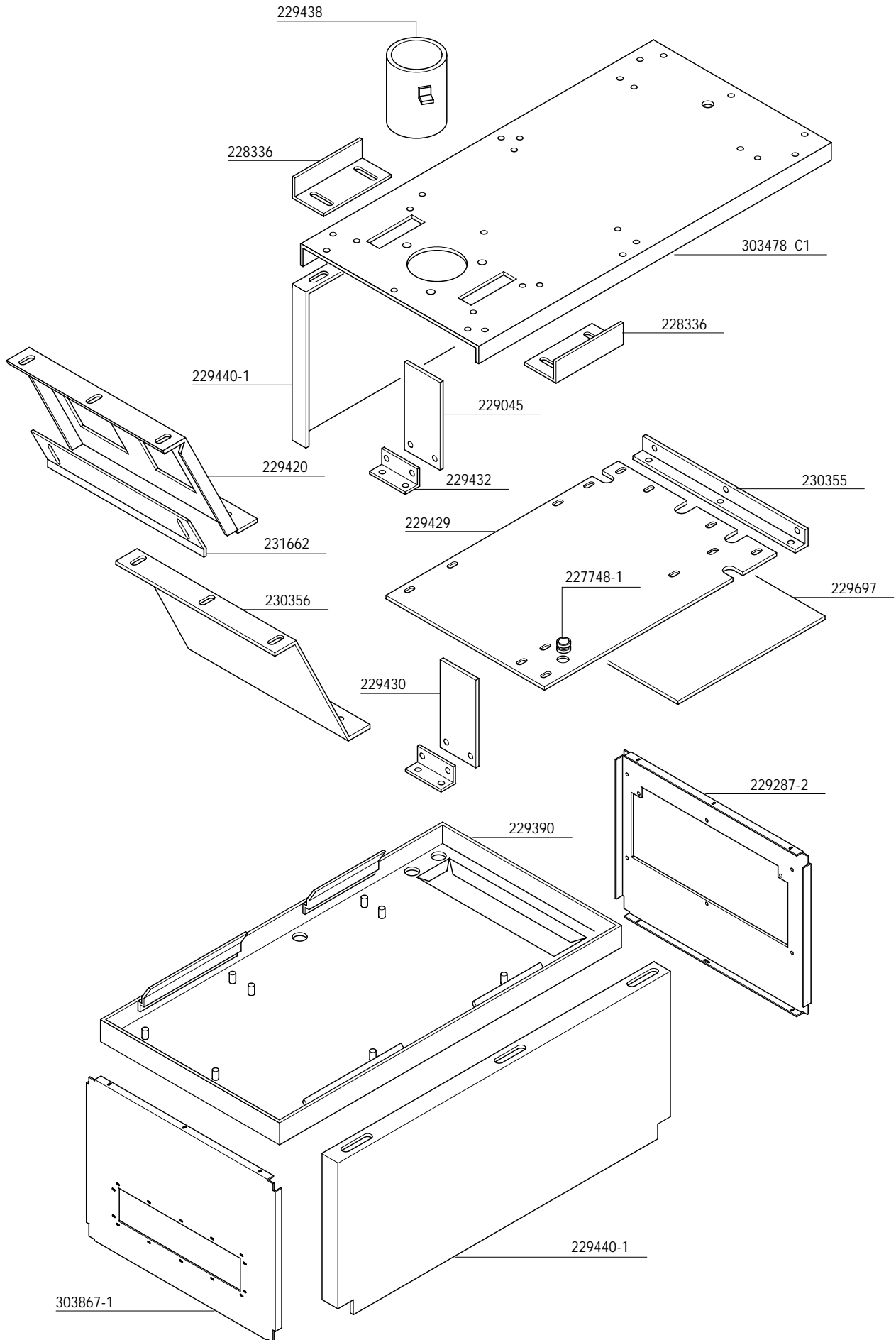


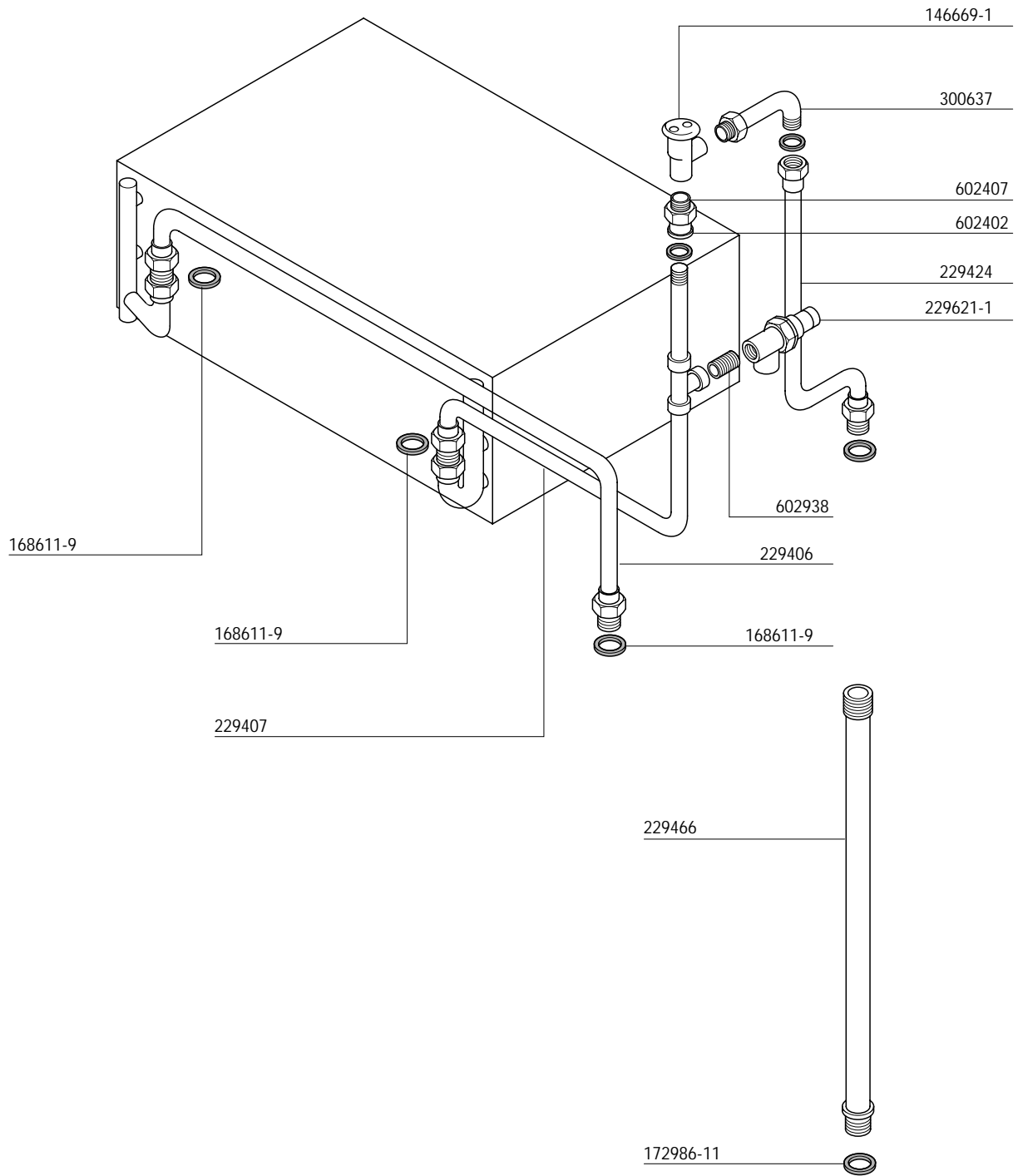
• steam
 vapeur
 Dampf
 stoom

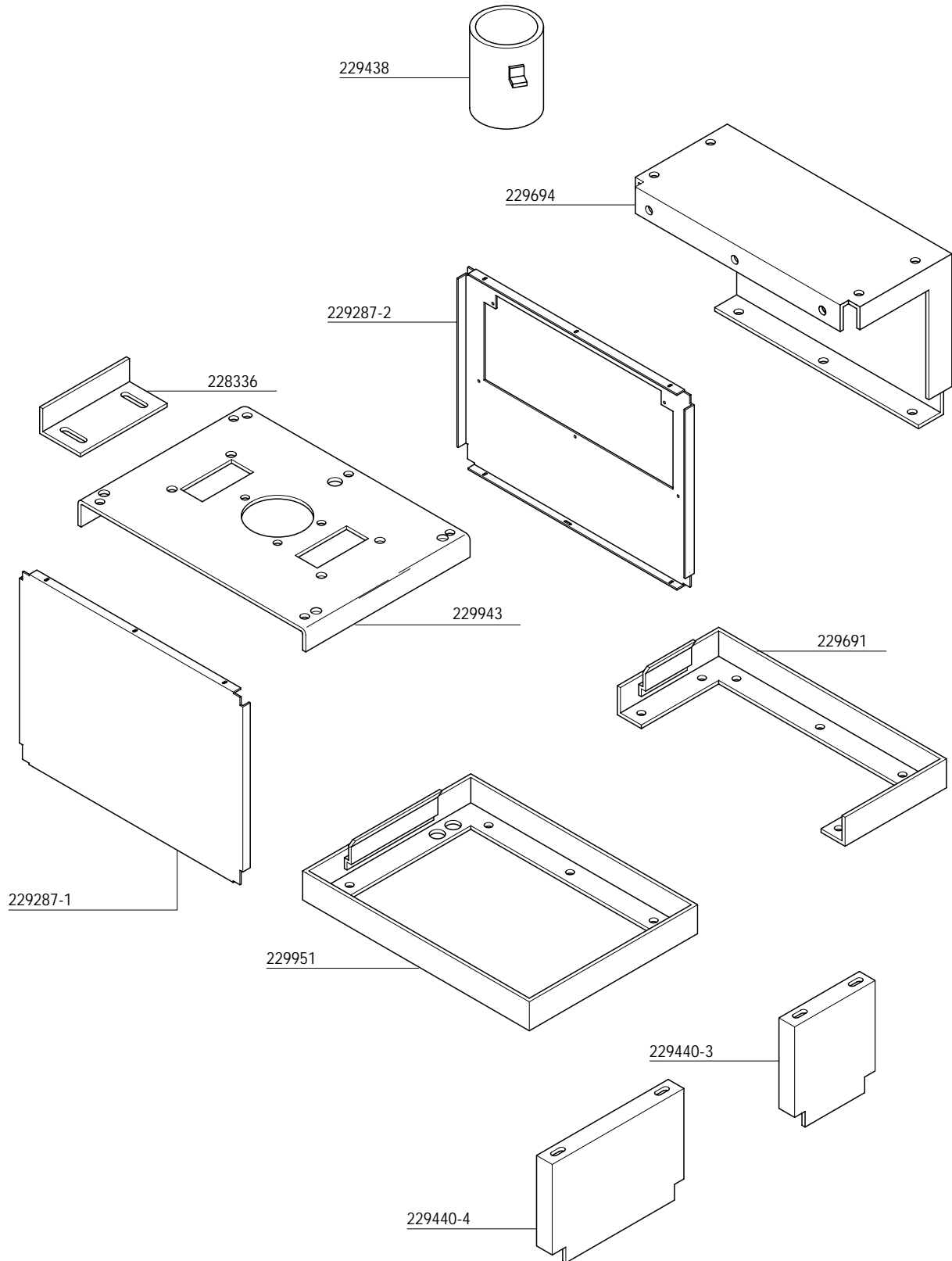
** hot water
 eau chaude
 Heißwasser
 heet water

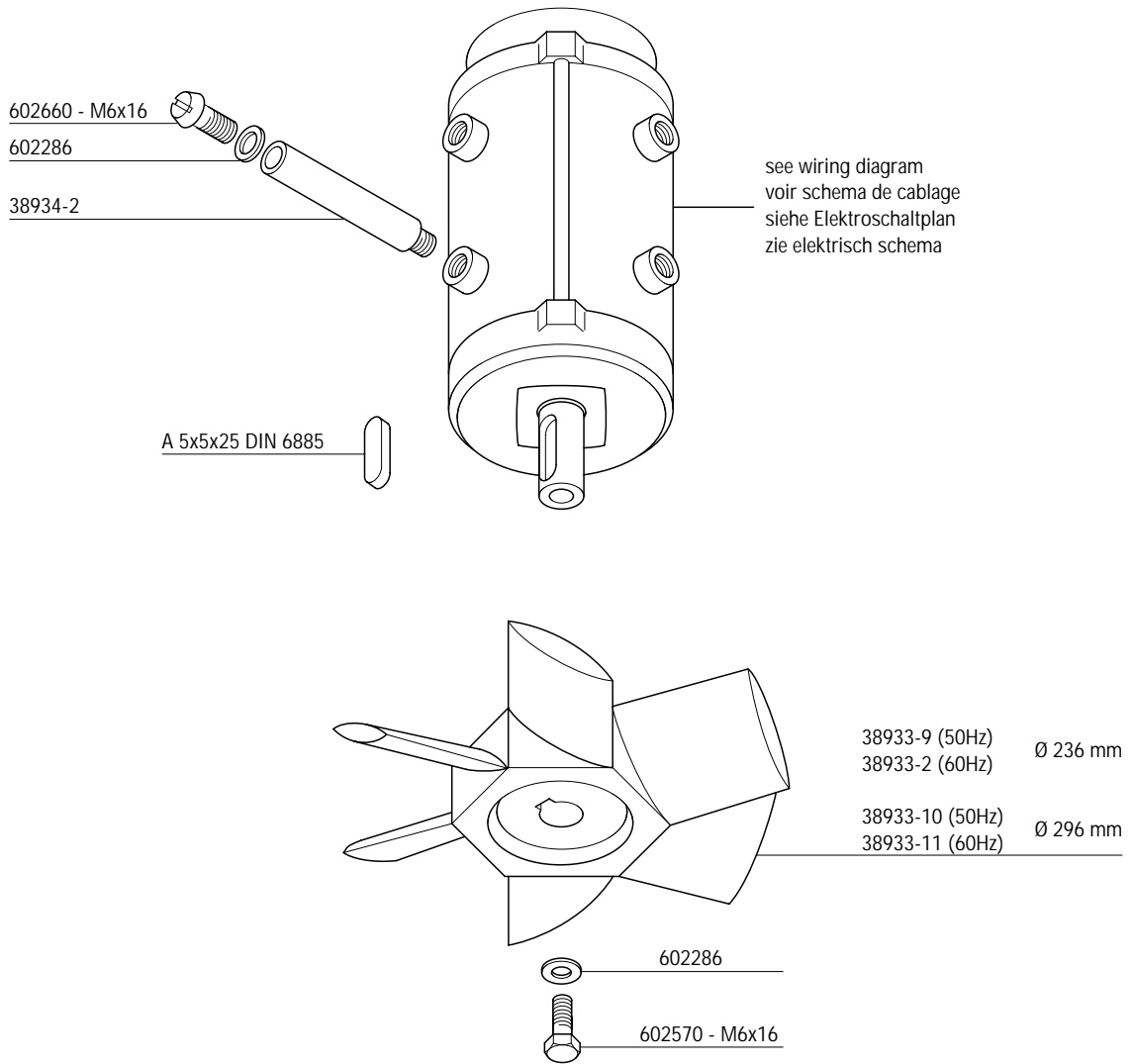
* 8 hole
 8 trous
 8 Loch
 8 gaten

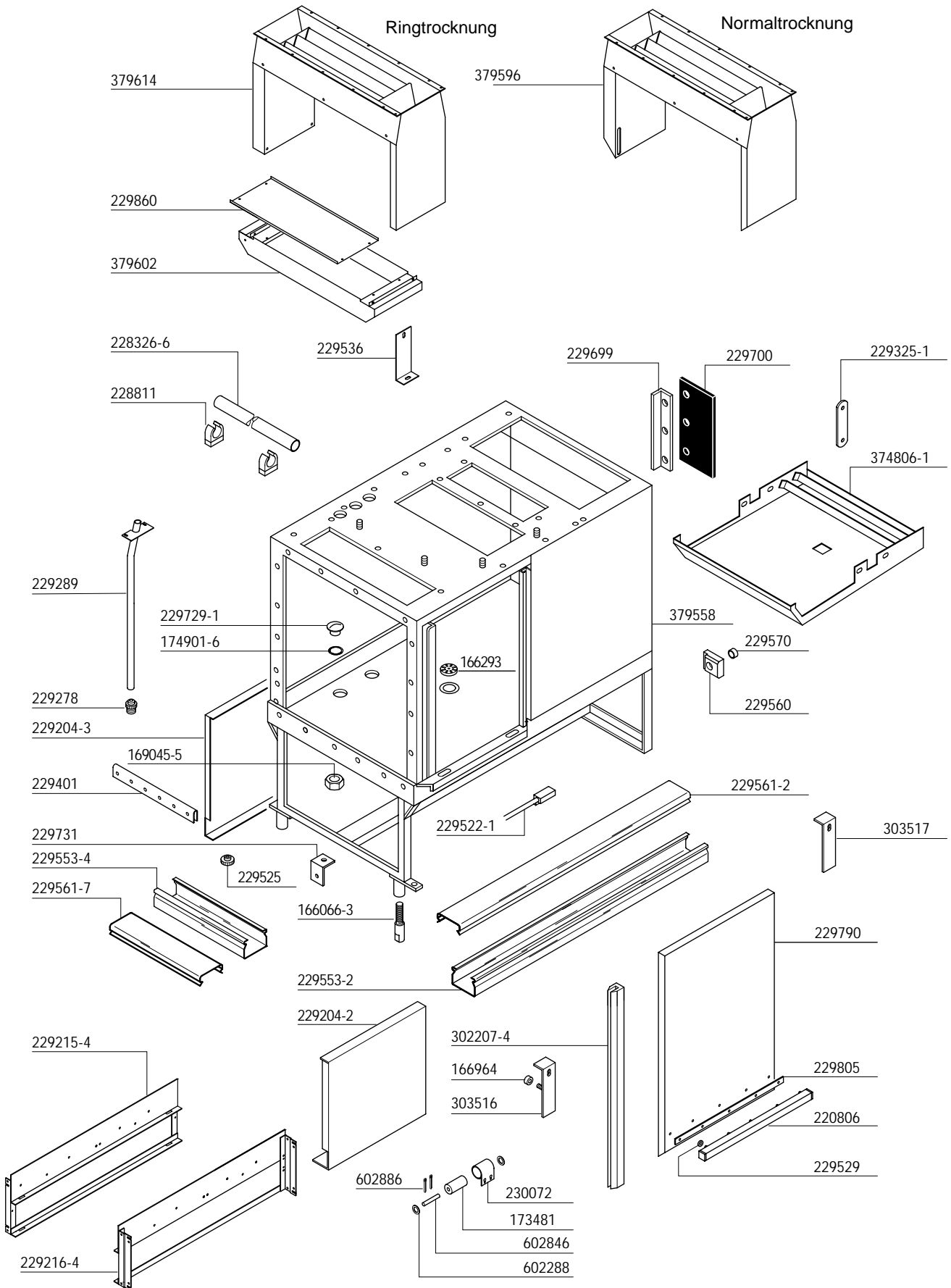
** 10 hole
 10 trous
 10 Loch
 10 gaten

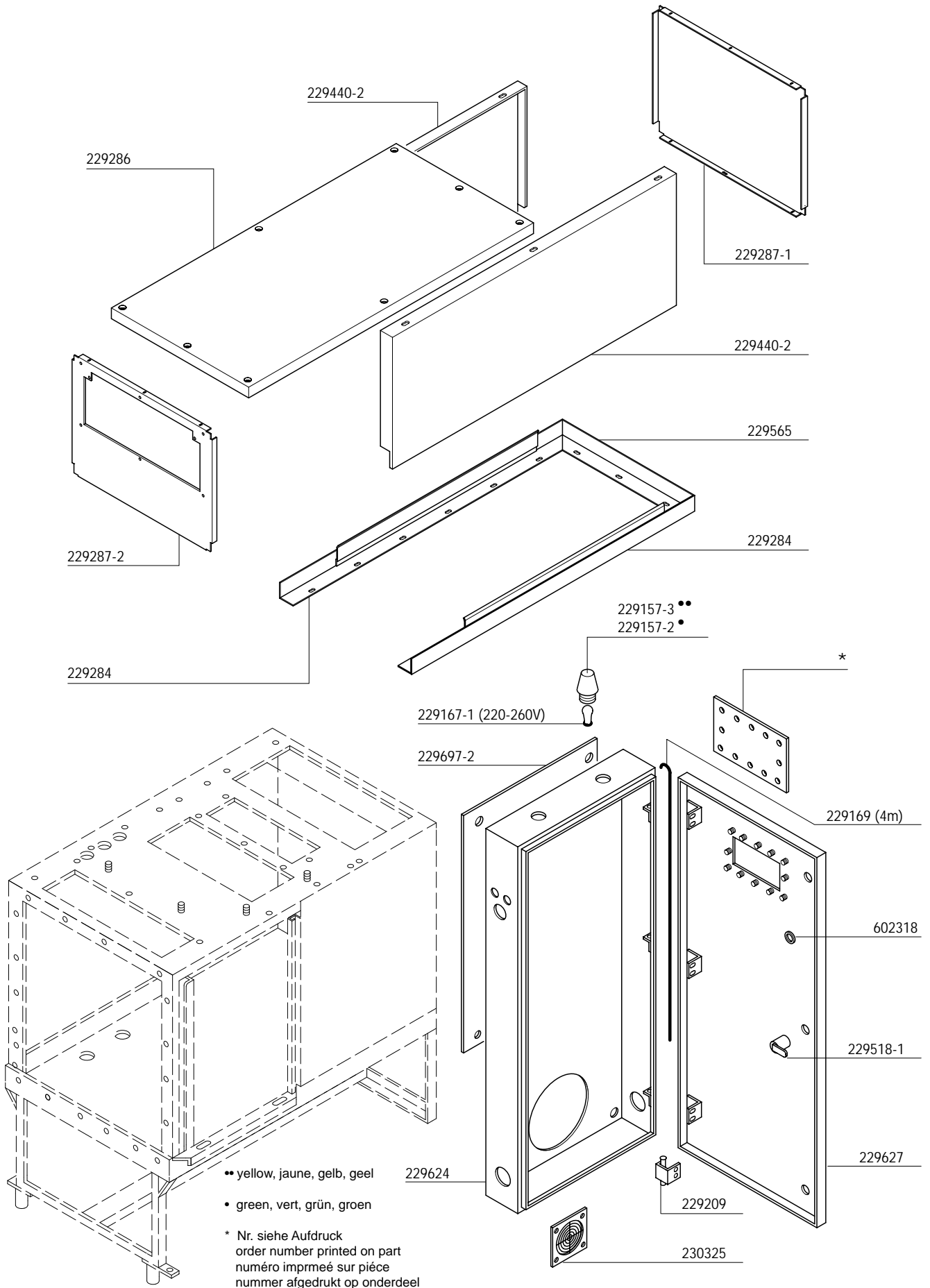


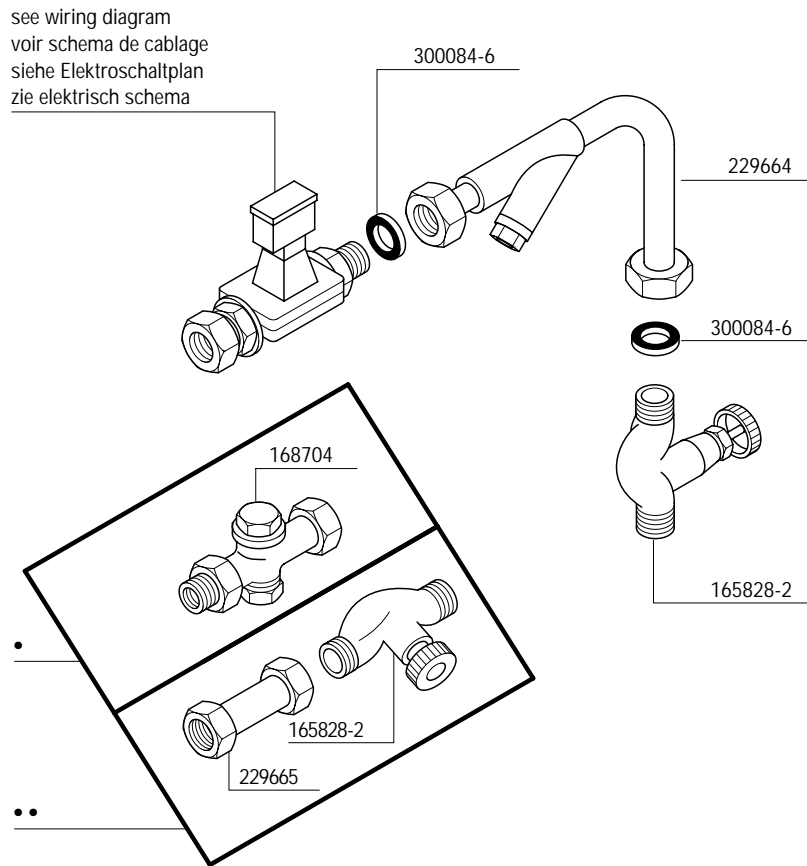












•

••

